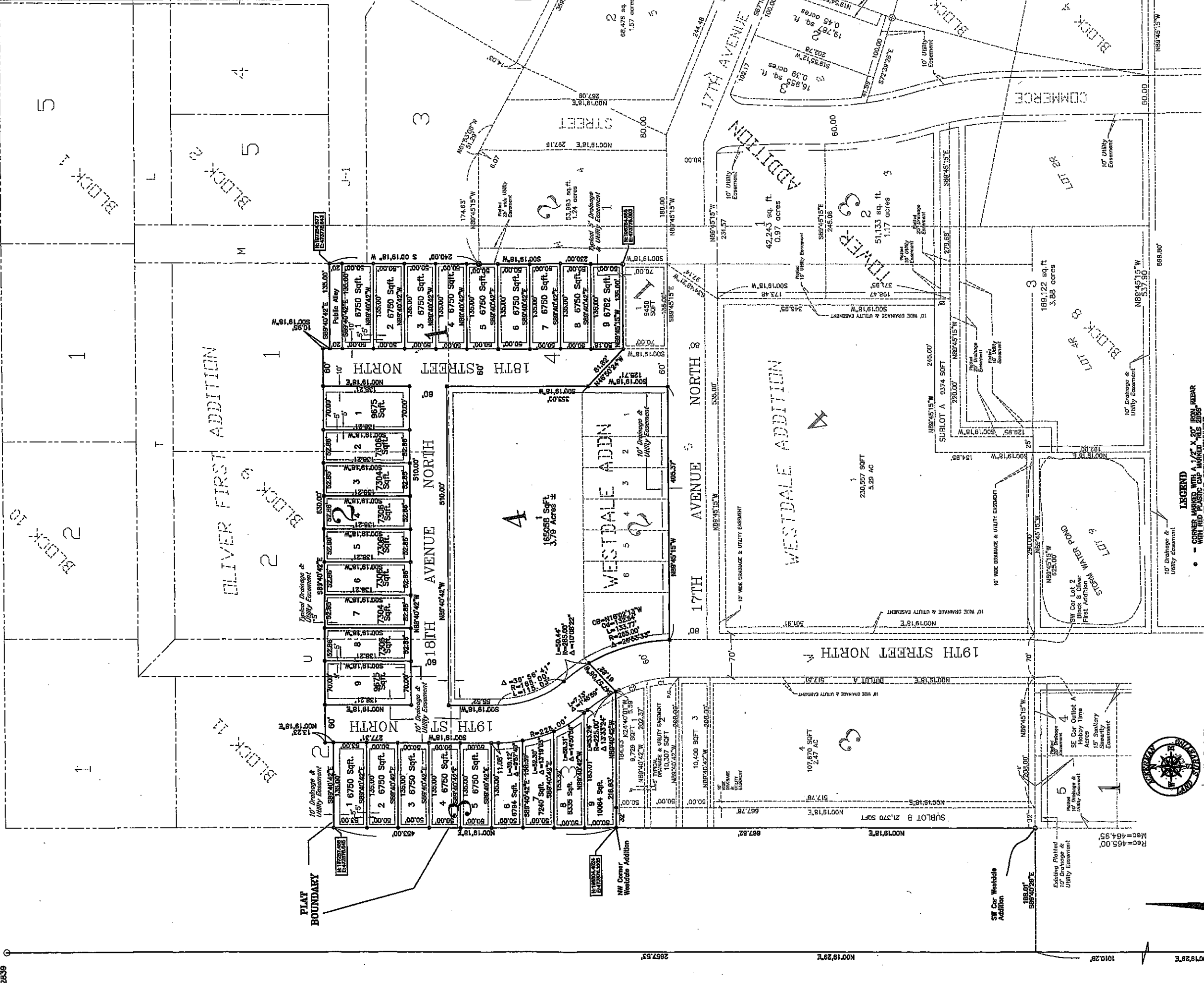


# PLAT OF WESTDALE 2ND ADDITION

TO THE CITY OF WAPETON, BEING A REPLAT OF A PART OF WESTDALE ADDITION, AND A REPLAT OF A PART OF OLIVER FIRST ADDITION, LYING WITHIN THE SOUTHWEST QUARTER OF SECTION 32, TOWNSHIP 133 NORTH, RANGE 47 WEST, CITY OF WAPETON, RICHLAND COUNTY, NORTH DAKOTA

W 1/4 Corner of Section 32-T133N-R47W  
Doc. No. 28339



- LEGEND**
- CORNER MARKED WITH A 1/2" X 1/2" X 20' IRON REBAR
  - EXISTING OR FOUND CORNER MONUMENT
  - △ STEEL PILE POST
  - REC. MEAS. RECORDED OR ORIGINAL DISTANCE THIS SURVEY
  - MON. MEAS. MEASURED DISTANCE ON FILE AT COUNTY MONUMENT RECORDS
  - NOTES - THIS SURVEY IS BASED ON AN THE WCCS
  - 1 - LOT NUMBER
  - 2 - BLOCK NUMBER
  - PROPERTY BOUNDARY
  - - - EASEMENT LIMIT LINE



187 South 2nd St  
Wapeton, ND 58075  
701-642-9404

**GRAPHIC SCALE**  
( IN FEET )  
1 inch = 60 ft.

SW Corner of Section 32-T133N-R47W  
Doc. No. 28440  
WCCS No. 85  
N 95127.918  
E 472868.620